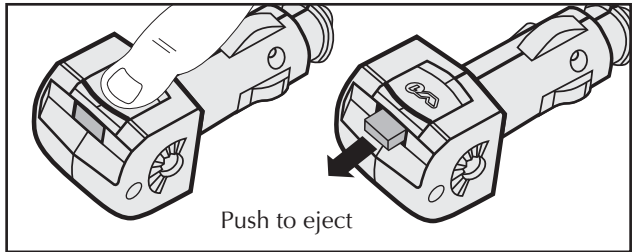
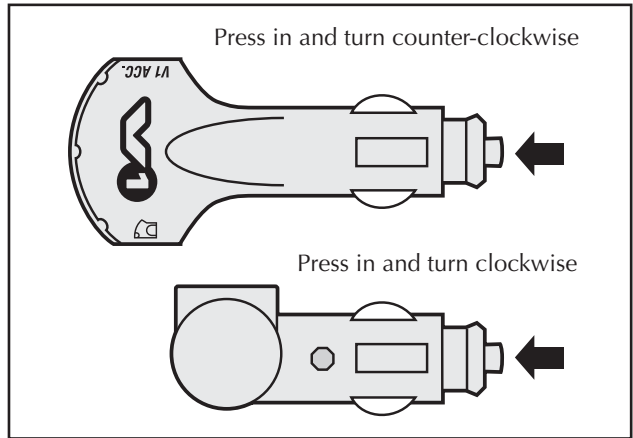


## Changing the Fuse

### Changing the Lighter Adapter Fuse



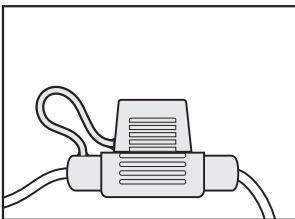
Adapters using 2-amp Mini Blade Fuse



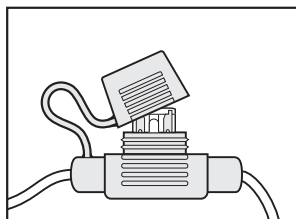
Adapters using 1-amp 5mm x 20mm fuse

### Changing the Direct-wire Power Adapter Fuse

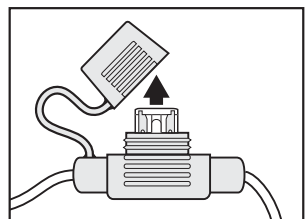
The fuse holder is in line with the power wire (red) to the Adapter. Lift the fuse cover from the body of the fuse holder. A twisting motion may help, or pry gently at the parting line with a thin tool, such as a small screwdriver. Unplug the fuse. Replace with a 2-amp Mini Blade fuse.



In-line fuse holder.



Lift cover.



Unplug fuse.